

Preface

Phoebus has been three years in the making. Its founders proudly present this first edition of the only art history journal in the state of Arizona. Enthusiastic plans are well underway for the second and succeeding issues.

Because of its nature, a local emphasis is inevitable. This does not mean, however, that *Phoebus* will deal only with local materials. In fact, its coverage will be less concerned with art being made in the state than with art maintained and collected throughout the state. Nor does it intend to discriminate among subject matter or fields within the discipline, so long as they fall within the interest of the contributing Arizona art historians. These could well be traditional Western, contemporary Eastern, Islamic, Pre-Columbian, North- or Southwestern Indian, etc.

The editorial policy of *Phoebus* is twofold:

1) To publish and publicize selected works of art from the public and private collections within the state, and

2) To serve as a rallying point for art historians, museums, art centers, and other institutions in the state, encouraging as well as providing a channel for research and publication.

Policy No. 1 aims particularly at the unfortunate predicament in Arizona that, in spite of the unsuspected richness and importance of its art collections, national recognition is slow in coming. It is hoped that through "Arizona Portfolio," in a regular series of articles and reviews, our modern effort can in some way remedy the existing situation.

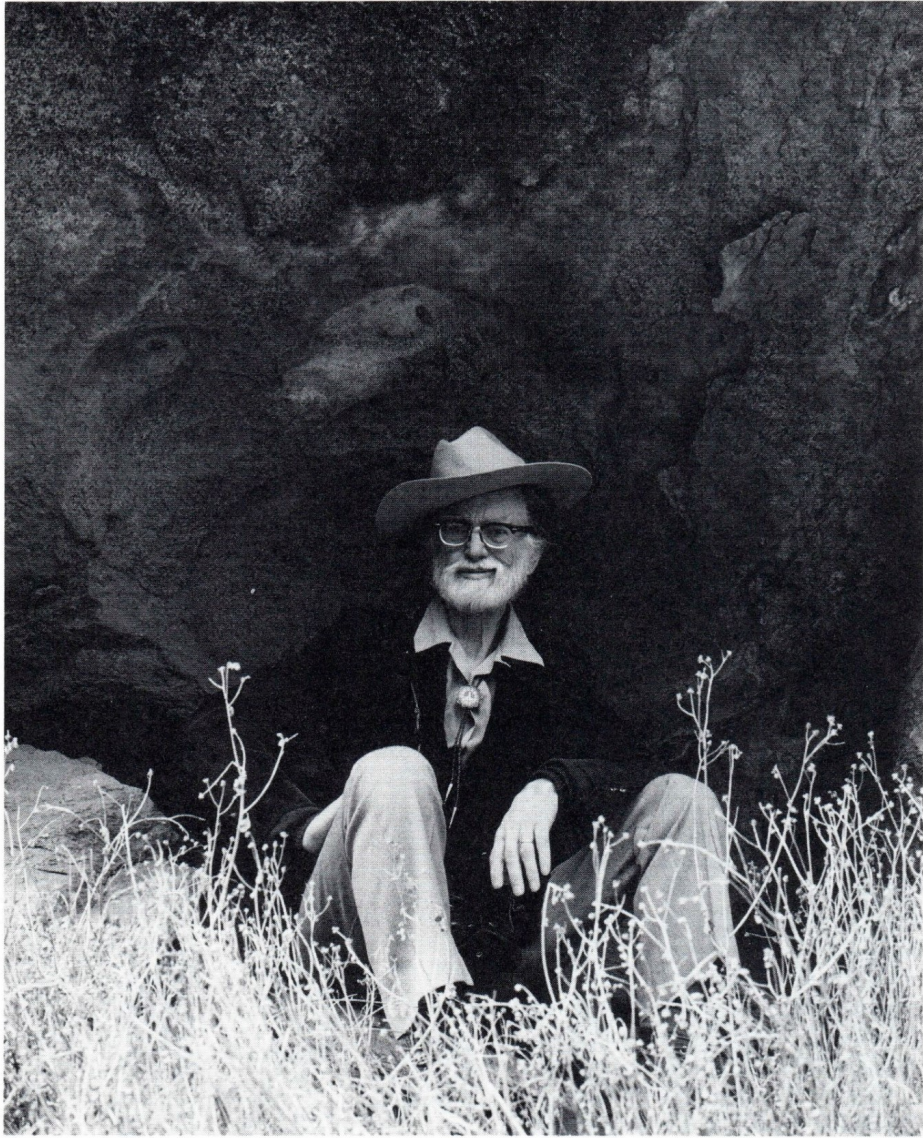
Policy No. 2 may belie the current "departmental" nature of this journal. All contributors of this issue either are or were associated with the Department of Art, Arizona State University. However, the intention is to invite future cooperation and participation of individuals and institutions in the state, thereby augmenting its scope to a regional publication.

We are grateful to the successive chairmen of the Department of Art,

Arizona State University, namely Professors Clyde Watson and Leonard Lehrer. Without their encouragement and support, the journal may never have become a reality. Credit must be given to Professor Anthony Lacy Gully for the choice of *Phoebus* as the title of the journal; its solar allusion befits a publication emerging from the Valley of the Sun. To our excellent designer, Mr. Chip Kettering, who generously donated his effort and time, this journal owes its appearance. Thanks must also be given to David Sparks, who, with his fine eye for detail, was able to bring this journal within the bounds of modern technical scholarship.

Finally, it is to Harry Wood, Professor Emeritus and chairman of the Department of Art from 1955 to 1966, that we dedicate this first issue of *Phoebus*.

Ju-hsi Chou
Editor-in-chief



Harry Wood, Professor Emeritus
Photo by Robert Gilge, 1974